



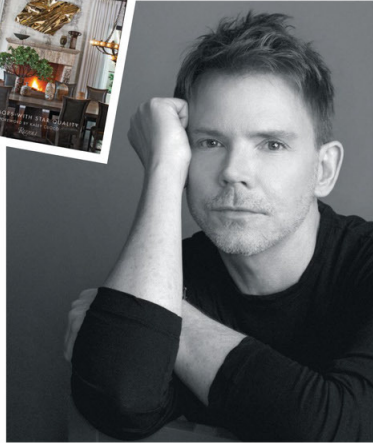
# THE LIGHT STUFF

Sconces, lamps and pendants are the jewelry of home decor, and Los Angeles-based interior designer Jeff Andrews knows his way around adornment—as evidenced by this glamorous Glendale home that sparkles under his eye.

BY ABIGAIL STONE  
PHOTOGRAPHY BY LAURA HULL



A group of patinated pendants from Worlds Away accentuate the living room's double-height ceilings, while the round Edward Fields rug corals furniture into a cozy cluster. Opposite page: Interior designer Jeff Andrews customized the pendant lighting that dries down beside the grand staircase.



**L**auded for his ability to bring silver-screen-worthy style into any home, Los Angeles-based interior designer Jeff Andrews has a knack for creating spaces that are lavishly luxurious yet entirely livable. Just ask Kaley Cuoco, Kris Jenner, Kourtney Kardashian or Ryan Seacrest, a few of the A-listers who have tapped Andrews' expertise over his 20-year career. Now, in his first book, *The New Glamour: Interiors with Star Quality* (Rizzoli, March), Andrews is sharing a peek inside some of his most elegant, awe-inspiring and never-seen-before projects—including this comely contemporary Mediterranean home in Glendale.

The 5,000-square-foot home is a ground-up new construction for a couple with two young children. The idea was to create an easygoing, functional yet chic space; the family regularly entertains, and requested a formal dining area.

Andrews jumped into the project right from the get-go. The architectural highlights—wainscoting, ceiling treatments and arches—were his inspiration, and each element adds a touch of historic charm to the brand-new build. He also chose a cohesive palette of neutral grays, buffs and browns, warm metallics and muted patterns that weaves through both main living spaces downstairs and the quartet of en-suite bedrooms upstairs, providing continuity and a stylish flow from room to room.

But nothing elevates the home's visual impact more than the designer's dazzling lighting fixtures. Used throughout the home in multiples, as Andrews loves to do, they add theatricality with a touch of whimsy. "These rooms aren't excessively large, so my design directive was to keep them from feeling congested and add dramatic elements with glamorous dimension," he says. "My clients wanted subtle drama, or what I call 'personal glamour.'"

By day the home's glittering surfaces, subdued patterns and varied textures—from the bronze metallic Jeff Andrews for Astek wallpaper in the dining room, the Ironies Asilah chandeliers in the kitchen, and the custom bronze-and-gold mirrors and faceted ball lights from Worlds Away in the living room—all work with the home's natural light to dapple the rooms in gradations of shadow and light. At night, with each bulb aglow, every room takes on an otherworldly enchantment. "Great lighting is so important to a home's success," says Andrews. "It brings a cinematic quality and makes everyone look beautiful."

There's more to it than casting a home in its best light, of course. For Andrews, choosing just the right lighting fixtures is a chance to convey instant character. Take the formal dining room's Italian Murano glass fixtures from La Murrina. They resemble fluttering napkins, an apt choice for a room dedicated to meals. Then there's the playful gathering of Rejuvenation's globe lights that cavort across the coffered ceiling of the great room, emphasizing both the ceiling's architecture as well as the room's relaxed spirit. And in the living room, multiple pendants accentuate the double-height ceilings while also drawing the eye down into the cozy space. As Andrews advocates in his book, "every room should have a moment of visual levity: an element of surprise that expresses your personality." It's no wonder that the stars are drawn to him. He truly knows how to make anyone's world shine. ■



Dual lattice-patterned chandeliers add a glamorous element to the kitchen. Opposite page, from top: Designer Jeff Andrews and his first book; the dining room "was treated like a work of art," says Andrews, and features Murano glass chandeliers and wainscote wallpaper from Jeff Andrews for Astek.



The great room's open floor plan—which extends directly into an expansive outdoor living area as well—features a coffered ceiling that Andrews dramatized with a series of hanging globe lights from Rejuvenation.



## DESIGN DETAILS

**TYPE**  
Single-family home

**LOCATION**  
Los Angeles

**INTERIOR DESIGN**  
Jeff Andrews Design  
jeffandrewsdesign.com

### VENDORS

**A. RUDIN**  
Living room sofas, entryway chair  
arudin.com

**ASTEK**  
Living room Jeff Andrews wallpaper  
astek.com

**BLACKMAN CRUZ**  
Entryway table  
blackmancruz.com

**CIRCA LIGHTING**  
Dining room sconces  
circaighting.com

**HOUSE OF TAI PING**  
Living room Edward Fields rug  
houseoftai ping.com

**IRONIES**  
Kitchen pendant lights  
ironies.com

**LA MURRINA MURANO**  
Dining room pendant lights  
lamurrina.com

**REJUVENATION**  
Great room pendant lights  
rejuvenation.com

**RESTORATION HARDWARE**  
Living room sectional  
restorationhardware.com

**ROOM & BOARD**  
Kitchen counter stools  
roomandboard.com

**WALKER ZANGER**  
Kitchen island quartzite countertop  
walkerzanger.com

**WOODLAND FURNITURE**  
Dining room table  
woodlandfurniture.com

**WORLDS AWAY**  
Living room pendant lights  
worlds-away.com