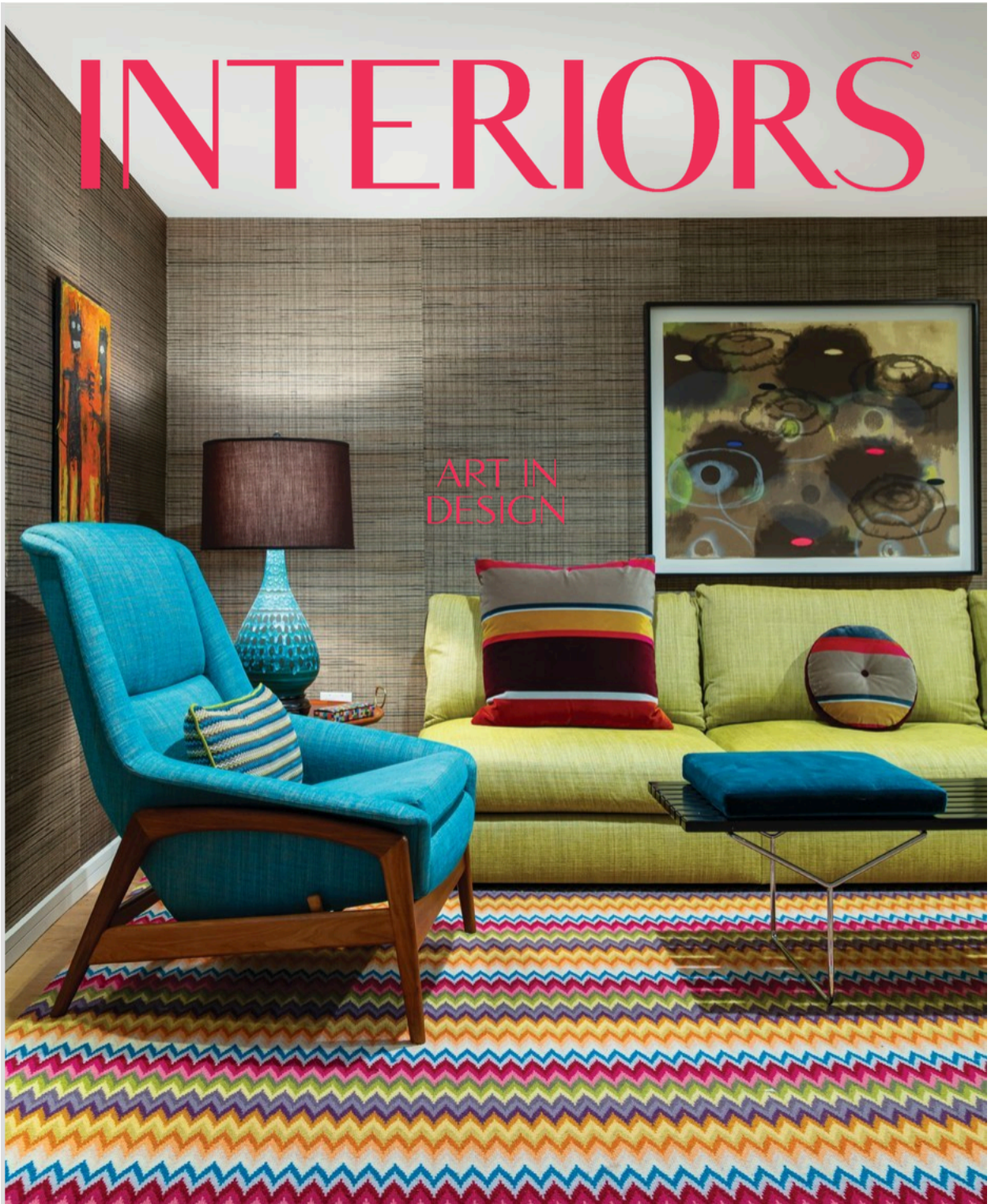
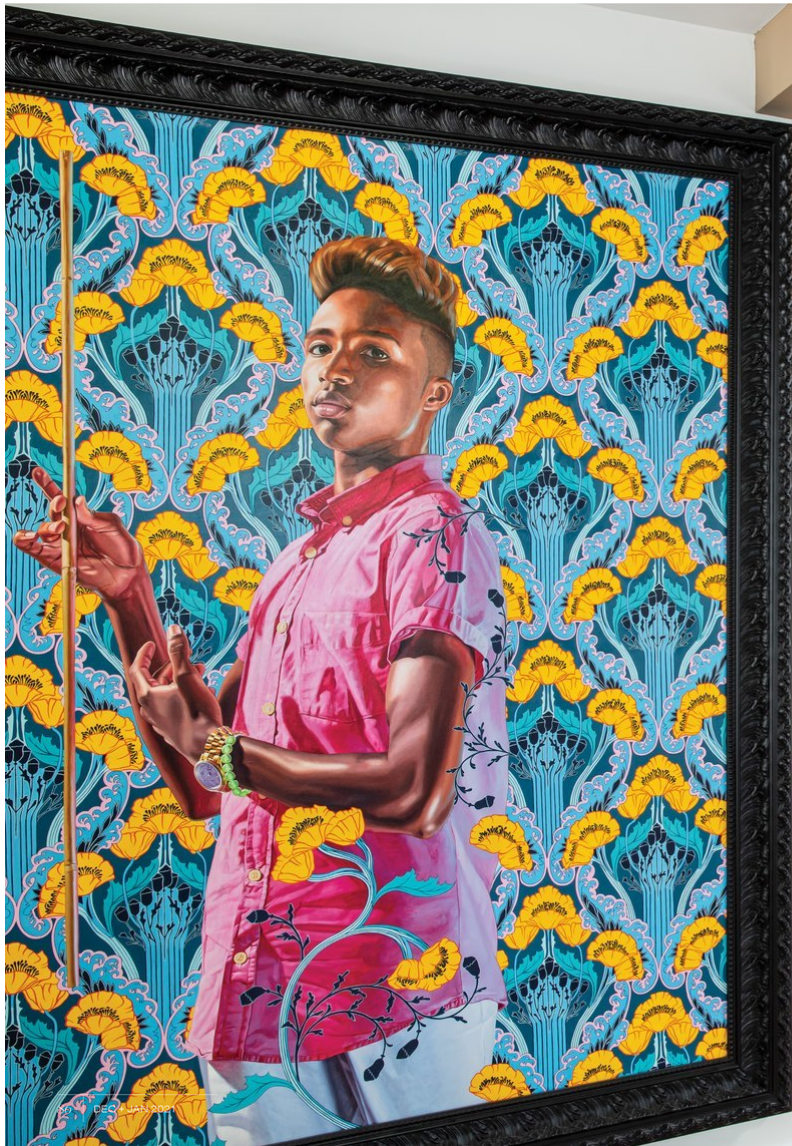


# INTERIORS<sup>®</sup>

ART IN  
DESIGN







SOLO  
SHOW

INTERIOR DESIGN: JAMES MAGNI  
TEXT: ABIGAIL STONE  
PHOTOGRAPHY: MANOLO LANGIS









Brian Fahlstrom's *Interharmony* dominates the dining area, its Carrara marble-topped Saarinen table surrounded by vintage midcentury dining chairs covered in a light Romo tweed. Its idyllic palette is balanced, in the nearby entry, by Kehinde Wiley's mesmerizing *Angel Gabriel*, a vivid painting by Jonathan Apgar and two Warren Platner chairs, linked by Magni Home Collection's glass Jewel table. The color of the chair's mohair upholstery, a deep variation of Magni's favorite teal blue, is peppered throughout the space, a subtle thread tying it together. It's in the collection of dishware displayed on the kitchen's open shelving, on the lone pillow that decorates the living room sofa and, on the back terrace, it erupts on pillows that populate the custom sectional and the Sunbrella cushions on the lounge chairs.

That same hue also finds its echo in the primary suite, where it's a singular deviation from the voluptuous finishes in shades of brown with which Magni has wrapped the entire room: the deep walnut-paneled walls and ceiling, a taupe leather bed, a woven dark leather bench, thick wool carpets and the worn wood of the intricately carved African stool. Save for Annie Lapin's *The Shiny*, the room is also devoid of art. "It was about not being activated," he says. The room's visual tranquility allows him to focus on the books he devours each night.

But it's in the TV room on the lower level, which is accessed by a spiral staircase that winds past a photograph by Mona Kuhn and a Seguso glass vase from the 1960s, that it struts its most brilliant variation. "I don't do color," Magni says. "But I wanted a room with color—so I did color!" The hue envelops a vintage chair, a lamp, an ottoman and a rocker, acting as a foil to the bright orange background on a 1960s figurative painting, the Magni Home Collection's Moroccan sofa in a pale chartreuse and the raucous Missoni Liuwa rug. Wallcoverings from Romo's Japanese series and a painting by Ross Bleckner mediate the energy of the various tints. "I like surprises in every project," Magni says. "And it's my own house; I can do what I want." It's a wild experiment for the refined designer. The result, like the rest of the home, is pure design alchemy. ■ *Magni Kalman Design*, [magnikalman.com](http://magnikalman.com)





A LIFE OF ADVENTURE (pages 48-55)

**INTERIOR DESIGN:** Douglas Design Studio; Jeffrey Douglas and Gordana DiMonte. **ARCHITECTURE:** Richard Wengle. **BUILDER:** JTF Homes. **ENTRANCE:** lights, Urban Electric Company; Apparatus sconces from Hollace Cluny; chair, Chevalier Antiques in France; Crown Colony Mirrors, France; hand-carved totem by Haida G'Waii tribe. **LIVING ROOM:** custom sofa, chairs and coffee table; Ciot marble fireplace; chandelier Larose Guyon; Threadcount sofa and chair fabric; Dominion Rug carpet; sofa pillow fabric from Pollack; chair pillow fabric from Edelman Leather; front window panels, Hill Brown. **CLARENCE HOUSE:** drapery fabric, Chase Irwin, all from Primavera; artwork by Wanda Koop through Division Gallery. **DINING ROOM:** Jeffrey Douglas Studio dining table; custom chairs; Chase Irwin drapery fabric; Threadcount chair fabric; Emanuele Furniture credenza; Bocci chandelier; Dominion Rug carpet; artwork, Bernar Venet. **KITCHEN:** Zimmer + Rohde drapery fabric; Roll & Hill pendants; De La Espada chairs and fabric, all from Hollace Cluny; countertop and backsplash, Ciot.



HIGH IMPACT (pages 56-65)

**INTERIOR DESIGN:** Pembroke & Ives, pembrokeandives.com. **BUILDER:** Silverlining. **ENTRANCE:** chandelier, Niamh Barry; KGBL custom bench; artwork, Nick Mauss. **LIVING ROOM:** Fort Street Studio carpet; custom Pembroke & Ives sofa; Stefan Bishop custom Puddle cocktail tables; chair by Jorge Zalszupin; floor lamp by Venini; artwork by Enoc Perez. **KITCHEN:** chairs from Mondo; stools by Mater Design. **DINING ROOM:** tables from Egg Collective; chairs by Jorge Zalszupin; custom scone and banquette; photograph by James Casebere. **POWDER ROOM:** mirror, Gregory Nangle "Don't Fade Away"; Max Ingrand for FontanaArte scone. **CLOSET:** pendants by Jeff Zimmerman; chair by Ron Zeff.



NOW AND ZEN (pages 66-75)

**INTERIOR DESIGN:** Sullivan Design Studio, sullivandesignstudio.com. **ARCHITECTURE:** Young and Borlik Architects, ybarchitects.com. **LANDSCAPE ARCHITECT:** Strata Landscape Architecture, strata-inc.com. **ENTRANCE HALL:** chandelier by Reflex. **LIVING ROOM:** Calacatta marble slab from Da Vinci Marble; Benjamin Moore paint; Gabriel Scott chandelier from Twentiih; drapes and decorative pillow from De Sousa Hughes; floor lamp by Future Perfect; rug from Stephen Miller Gallery; Hug armchair, sofa, coffee table and side table by Giorgetti. **DINING ROOM:** sideboard from B&B Italia; table lamp by Kneedler Fauchère; table and chairs from Giorgetti; drapes, Fortuny from Sloan Miyasato; custom rug by Floor Design; Benjamin Moore paint; chandelier by Lindsey Adelman sourced from The Future Perfect. **FAMILY ROOM:** sectional by Poliform; side table from Minotti; chair and coffee table from Poliform; floor lamp from Roche Bobois. **TEA ROOM:** rug by Oriental Carpet; sofa, armchair, wine and bar console, tea tray, trolley, tea table, desk, chair, vase, stool and lantern by Chi Wing Lo; winter white paint by Benjamin Moore.



FOR ALL SEASONS (pages 76-85)

**INTERIOR DESIGN:** Marc-Michaels Interior Design. **ARCHITECTURE:** Brenner Architecture Group. **BUILDER:** Mark Timothy. **LANDSCAPE DESIGN:** Peterson Design Professionals. **ENTRANCE:** chandelier from Holly Hunt; chairs from Hellman Chang; chair fabric by Brentano; credenza from Ironies; lamps from Studio A Home. **LIVING ROOM:** cocktail tables by Holly Hunt; pendant by Ingo Maurer; custom teletable by Troscan, with Garrett Leather. **DINING ROOM:** credenza from Ironies; Serip light fixture; custom table by Mark Jupiter; chairs by Randolph & Hein, fabric from Brentano. **BEDROOM:** bed, settee and nightstands by Bernhardt; pendants from Viso. **PRIMARY BATH:** tub from

MTI; filler from Roht; vanity chair from Interlude Home; cabinetry by Superior Wood Products; custom pendants by Diopri. **BAR:** barstools from A. Rudin. **EXTERIOR:** sofa, chairs and cocktail table from Holly Hunt; fabrics from Great Plains, Perennials and Ammon Hixon; dining table from Keltat; chairs from Ethimo; barstools and upstairs terrace chairs from Janus et Cie; rug from Perennials.



SOLO SHOW (pages 86-95)

**INTERIOR DESIGN:** James Magni of Magni Kalman, magnikalman.com. **ARCHITECTURE:** Marvin Beck. **ENTRANCE:** art, Kehinde Wiley Archangel/Gabriel; painting on wall by Jonathan Appar; pair Warren Platner chairs with glass pyramid by Magni Home Collection. **LIVING ROOM:** sofa by Magni Home Collection; sofa upholstered in Romo wool; coffee table by Magni Home Collection; Mies van der Rohe Barcelona daybed from Knoll in Knoll leather; Cedric Hartman side tables; rug by Mansour; artwork; hanging mobile by Tomas Saraceno; on pedestal, Joel Morrison polished cast stainless steel piece; Annie Lapin painting That Is Here and There; Erin Shirreff archival pigment print; white alabaster Jaume Plensa. **Sanna's Frozen Dream;** black and white print by April Gornick. **DINING ROOM:** Saarinen table; midcentury chairs in Romo tweed; glass bowl by Micucci; painting, Brian Fahlstrom. **INTERHARMONY, TV ROOM:** Moroccan sofa by Magni Home Collection upholstered in Romo; midcentury chairs upholstered in Romo; wallcovering, Romo's Japanese series; rug by International Carpets; art by Ross Bleckner; orange and black 1960s art, artist unknown. **BEDROOM:** bed upholstered in Magni Home Collection taupe leather with classic museum bench in Magni Home Collection ebony leather; lamps from Cedric Hartman; drapery fabric from Romo; wool runners by Mansour carpets; vintage African stool. **TERRACE:** custom sofa by Magni Home Collection; pair DWR lounge chairs upholstered in Sunbrella fabric.

SUBSCRIPTION QUESTIONS

phone: 815 732 5287 | fax: 815 732 9889  
interiors@pubservice.com



A. Rudin  
arudin.com



Fuse Lighting  
333.571.2034  
fuselighting.com



Berman Roseff  
310.476.6242  
bermanroseff.com



Hammerforn  
hammerforn.com



Bright  
brightchair.com



Holly Hunt  
hollyhunt.com



Charleston Forge  
charlestonforge.com



Kyle Bunting  
kylebunting.com



Connal  
864.429.6733  
connalshades.com



Powell & Bonnell  
416.764.4210  
powellandbonnell.com



Eggenmann  
eggenmannusa.com



Wapp & Welt  
215.564.0944  
wappandwelt.com



**MTI:** filler from **Rohit**; vanity chair from **Interlude Home**; cabinetry by **Superior Wood Products**; custom pendants by **Diospri**. **BAR:** barstools from **A. Rudin**. **EXTERIOR:** sofa, chairs and cocktail table from **Holly Hunt**; fabrics from **Great Plains**, **Perennials** and **Ammon Hixon**; dining table from **Kettal**; chairs from **Ethimo**; barstools and upstairs terrace chairs from **Janus et Cie**; rug from **Perennials**.



SOLO SHOW (pages 86-95)

**INTERIOR DESIGN:** James Magni of Magni Kalman, magnikalman.com. **ARCHITECTURE:** Marvin Beck. **ENTRANCE:** art, Kehinde Wiley *Archangel Gabriel*; painting on wall by Jonathan Appar; pair Warren Platner chairs with glass pyramid by Magni Home Collection. **LIVING ROOM:** sofa by Magni Home Collection; sofa upholstered in Romo wool; coffee table by Magni Home Collection; Mies van der Rohe Barcelona daybed from Knoll in Knoll leather; Cedric Hartman side tables; rug by Mansour; artwork; hanging mobile by Tomas Saraceno; on pedestal, Joel Morrison polished cast stainless steel piece; Annie Lapin painting *That Is Here and There*; Erin Shirreff archival pigment print; white alabaster Jaume Plensa. Sanna's *Frozen Dream*; black and white print by April Gornick. **DINING ROOM:** Saarinen table; midcentury chairs in Romo tweed; glass bowl by Micucci; painting, Brian Fahlstrom, *Interharmony*. **TV ROOM:** Moroccan sofa by Magni Home Collection upholstered in Romo; midcentury chairs upholstered in Romo; wallcovering, Romo's Japanese series; rug by International Carpets; art by Ross Bleckner; orange and black 1960s art, artist unknown. **BEDROOM:** bed upholstered in Magni Home Collection taupe leather with classic museum bench in Magni Home Collection ebony leather; lamps from Cedric Hartman; drapery fabric from Romo; wool runners by Mansour carpets; vintage African stool. **TERRACE:** custom sofa by Magni Home Collection; pair DWR lounge chairs upholstered in Sunbrella fabric.

SUBSCRIPTION QUESTIONS

phone: 815 732 5287 | fax: 815 732 9889  
interiors@pubservice.com

A. Rudin  
arudin.com



Fuse Lighting  
323 537 2034  
fuselighting.com



Berman Roseff  
310 475 4242  
bermaroseff.com



Hammerlon  
hammerlon.com



Bright  
brightchair.com



Holly Hunt  
hollyhunt.com



Charleston Forge  
charlestonforge.com



Kyle Bunting  
kylebunting.com



Conrad  
866 426 4723  
conradhodes.com



Powell & Bonnell  
416 764 4210  
powellandbonnell.com



Eggermann  
eggermannusa.com



Warp & Weft  
215 566 0944  
warpandweft.com

